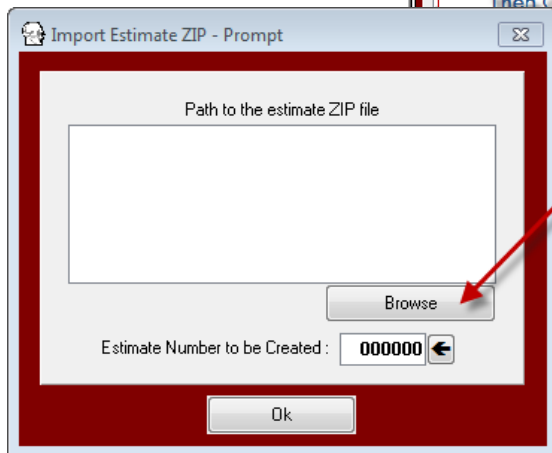
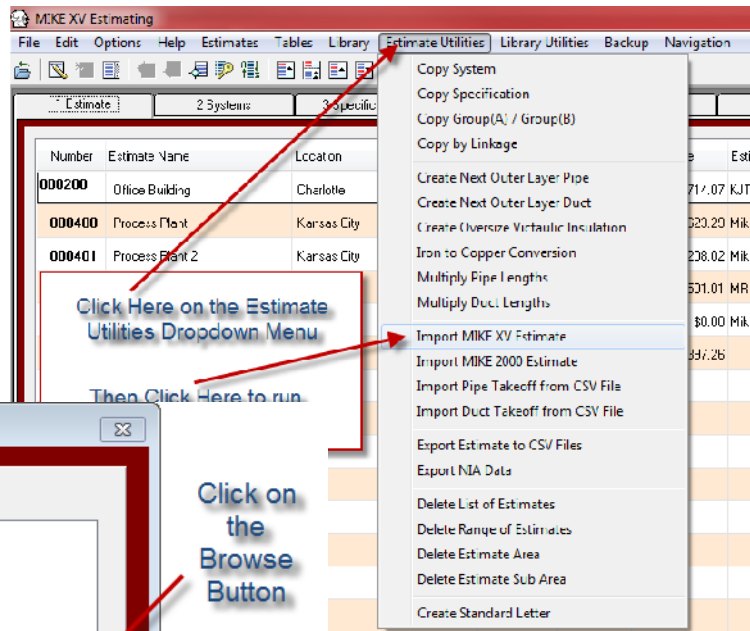


Comput-Ability® Estimate Systems Mechanical Insulation's Key Estimator™ - Version XV

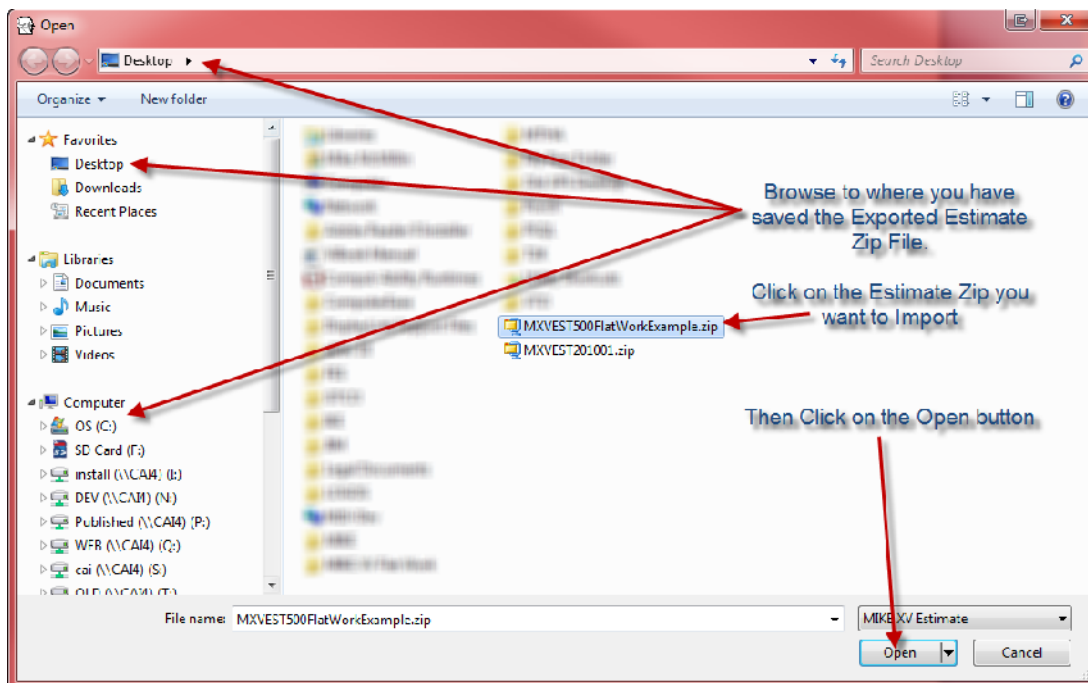
MIKE™ XV Guide to importing an Estimate.

Step 1: Open the Import MIKE™ XV Estimate program in the Estimate Utilities dropdown menu.

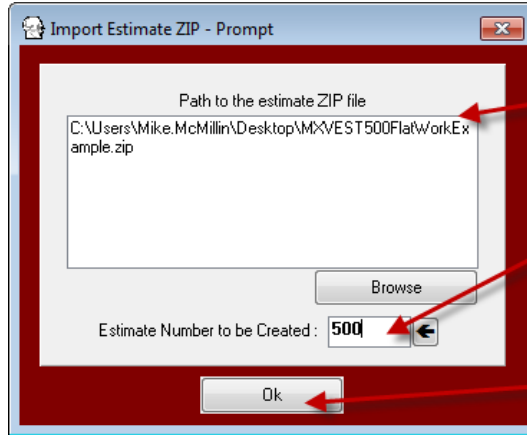
Step 2: Click on the Browse button and select and open a MIKE™ XV Exported Estimate Zip file.



Step 3: Browse to the folder where the file resides. Click on it to make it the active file then click on the Open button to return the file's pathname.



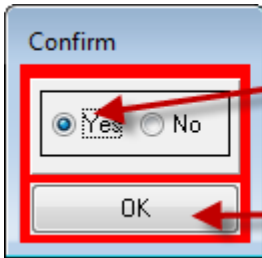
Step 4: Enter an unique Estimate Number. The number does not have to be the same as the Exported Estimate Number. It just has to be unique to the import database. Then *click* on the **Ok** button.



The file Pathname will show here

Enter a new Estimate Number

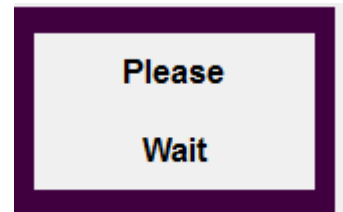
Click on the Ok button



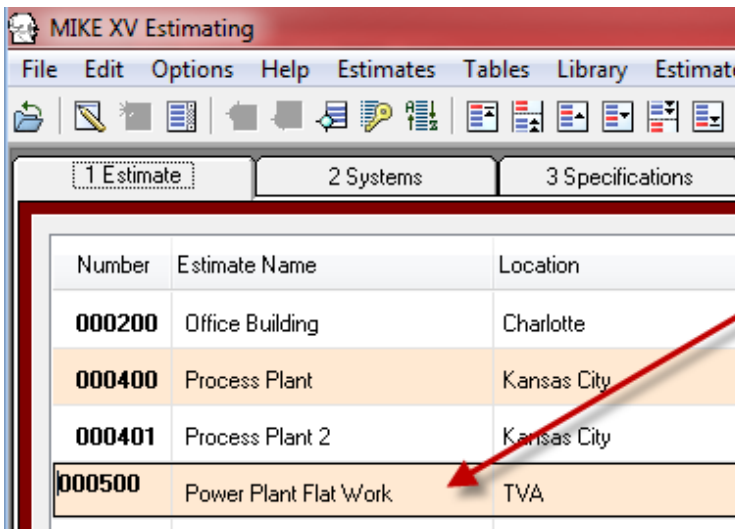
Click on Yes

Then click on the Ok button

Step 5: Click on the Yes radio button in the the Confirm screen. Then *click* on the **Ok** button. A **Please Wait** screen will display while the Estimate is being created.



Step 6: Open the Estimate List and the Imported Estimate will show in the list.



The Imported Estimate will be in your Estimate List

© 2010 Comput-Ability, Incorporated All rights reserved.

MIKE™ and **Visual TakeOff+™** are trademarks of Comput-Ability, Incorporated.

Comput-Ability® is a registered trademark of Comput-Ability, Incorporated.