

Comput-Ability, Inc.

The MIKE 10™ Guide to Installation

Mechanical Insulation's Key Estimator - Version 10

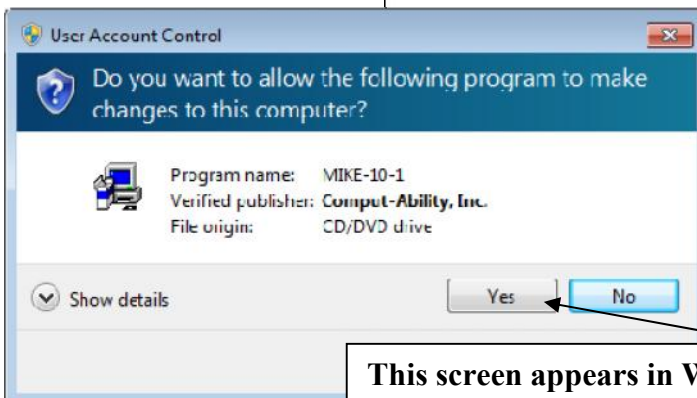
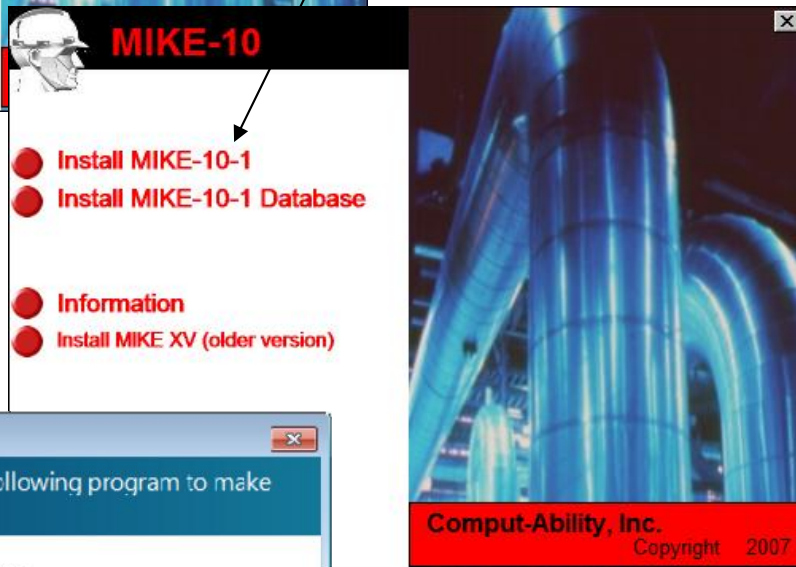
This MIKE 10 Guide to Installation will guide you through the installation of the MIKE 10 System. After you insert the MIKE Installation CD into the CD drive the following menu will appear.

Click on MIKE 10™ menu item.



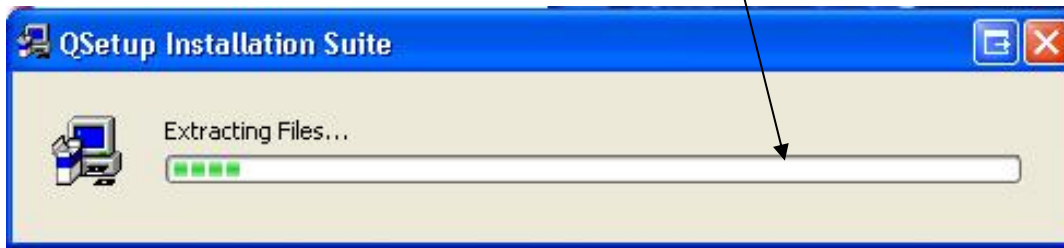
The following menu will appear. Click on the Install MIKE 10 menu item

The Install MIKE 10 Database Routine is explained later in this document.

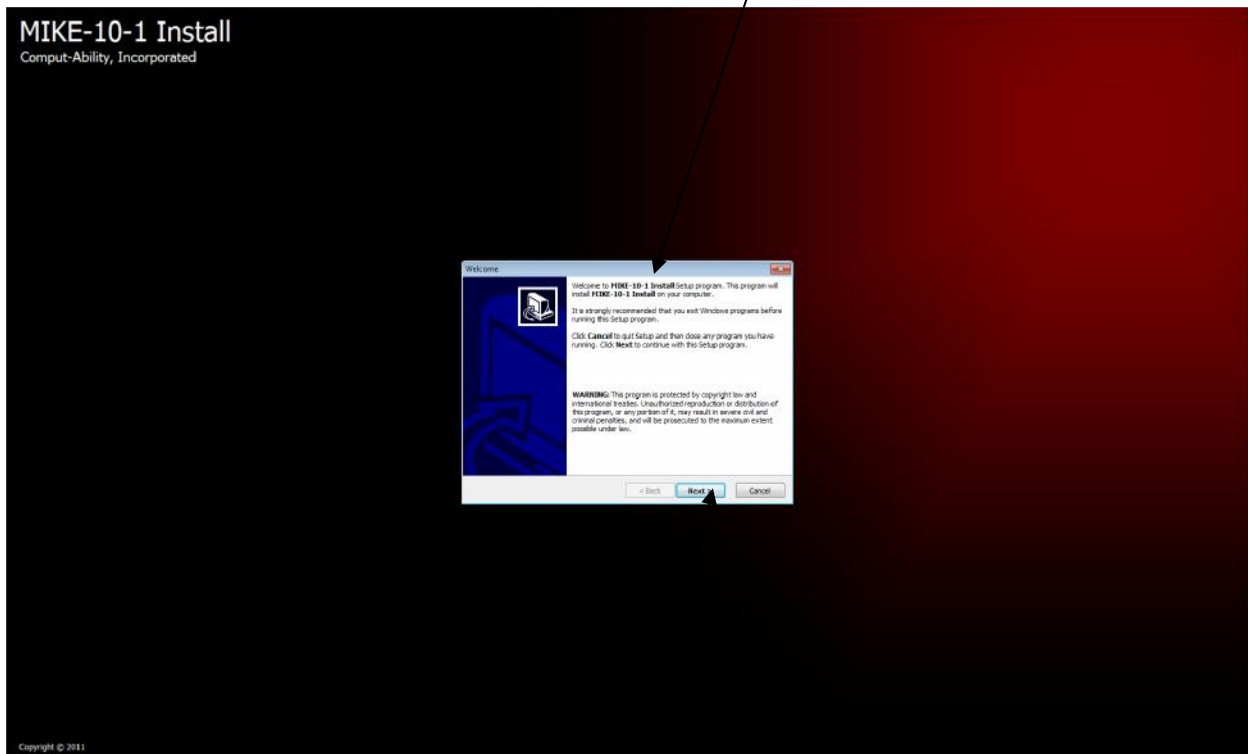


This screen appears in Windows 7 - Click on Yes

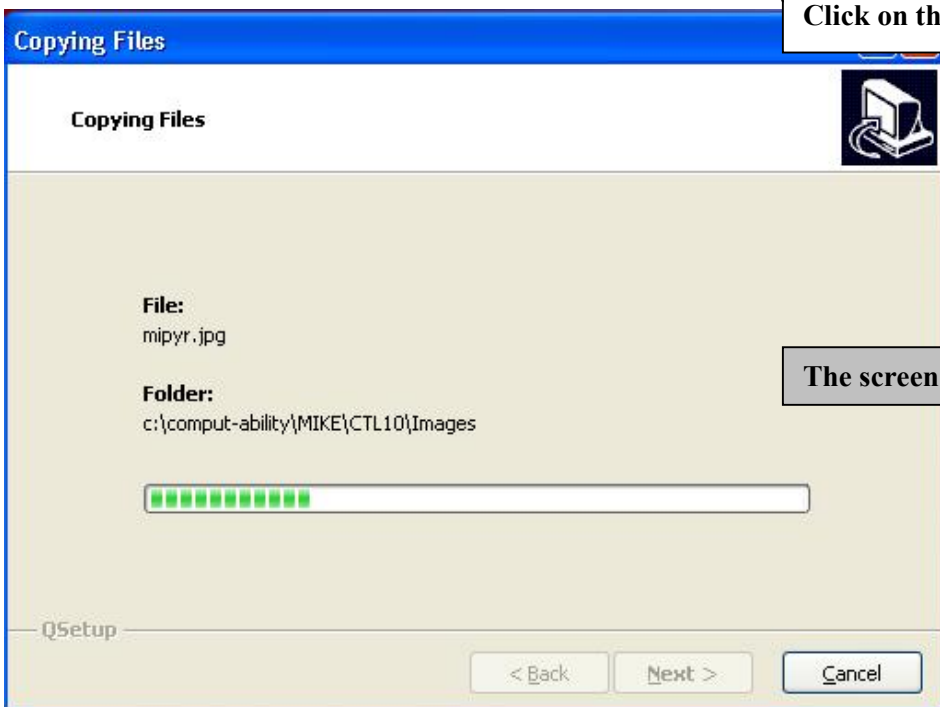
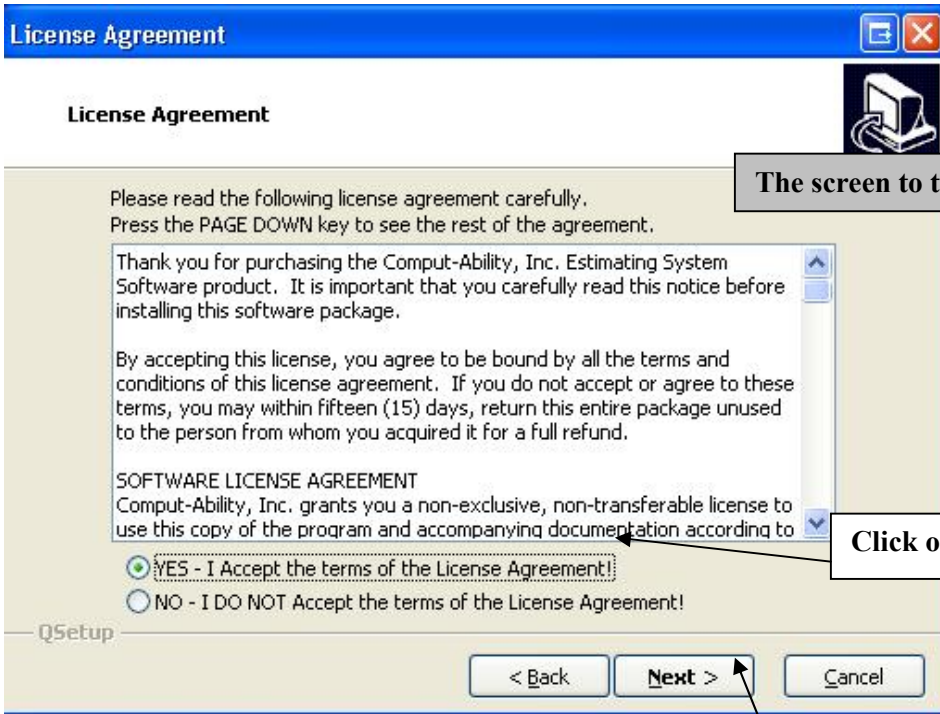
The following information appears on your screen

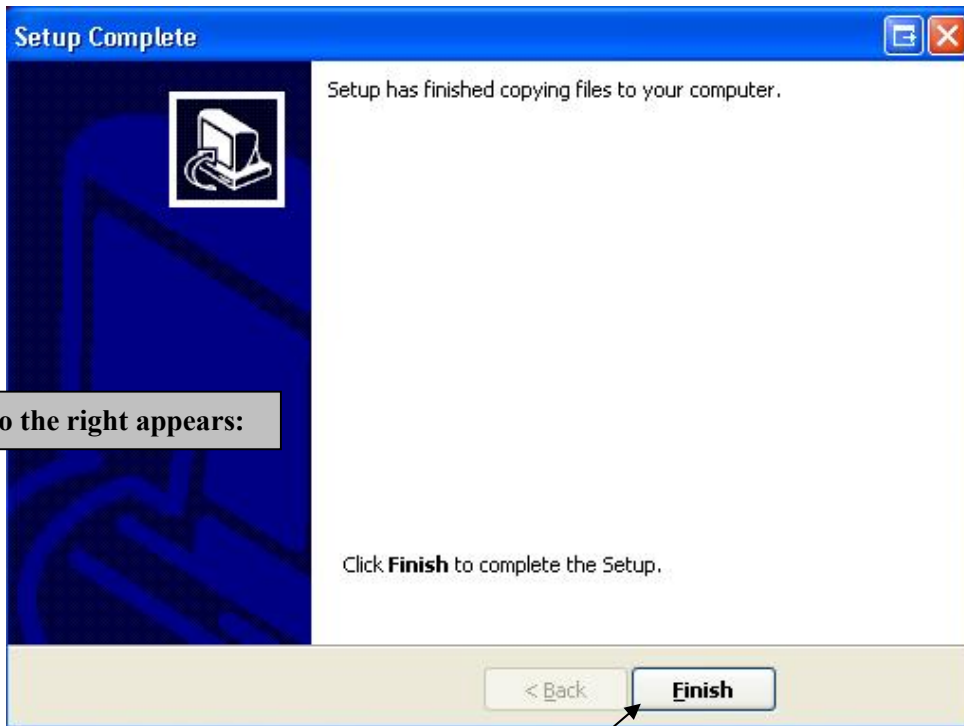


The following screen will appear.



Click on the Next button.





The screen to the right appears:

Click on the Finish button.

Very Important - Please Note

This Installation process can also install a database. This database Includes Material Pricing, Labor Productivity and example estimates.

If this is a first time installation you will need to install a Database for the MIKE system to run correctly.

Do Not install a Database if you are currently running MIKE 2000 on your computer.

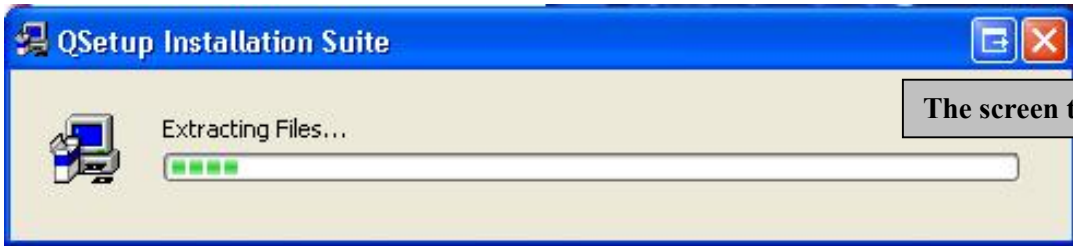
Database Installation Instructions continue on the next page.



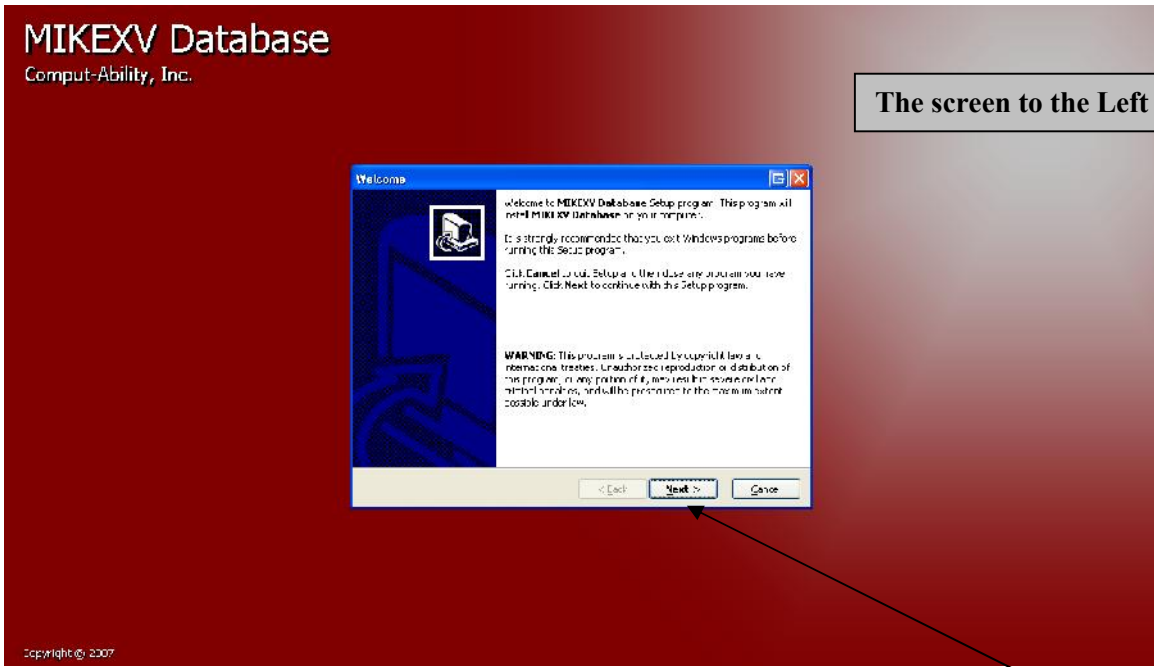
Very Important - Please Note
See Database Installation Note on previous page.



**The following menu will appear.
Click on the Install MIKE 10 Database menu item**

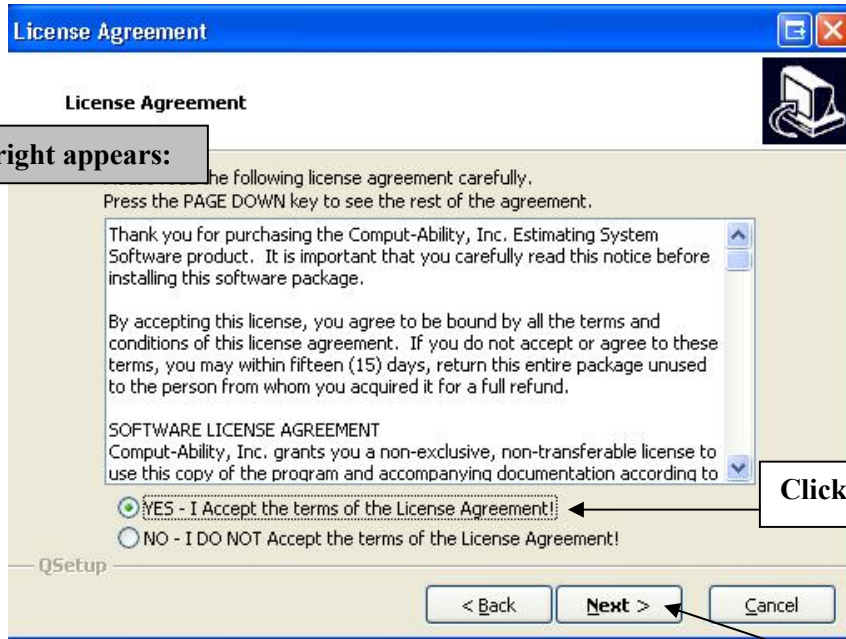


The screen to the left appears:



The screen to the Left appears:

Click on the Next button.



The screen to the right appears:

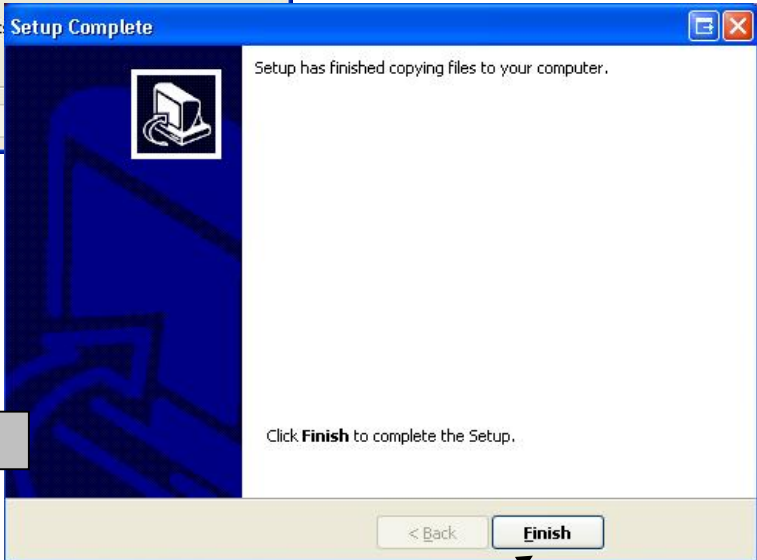
Click on the Yes button.

Click on the Next button.



The screen to the Left appears:

The screen to the right appears:



Click on the Finish button.