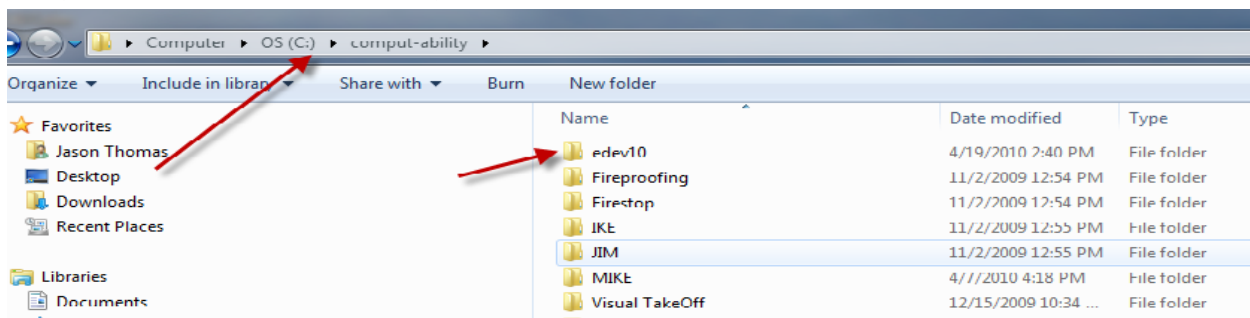


## Fixing “Error - Constant File Cannot Be Opened”

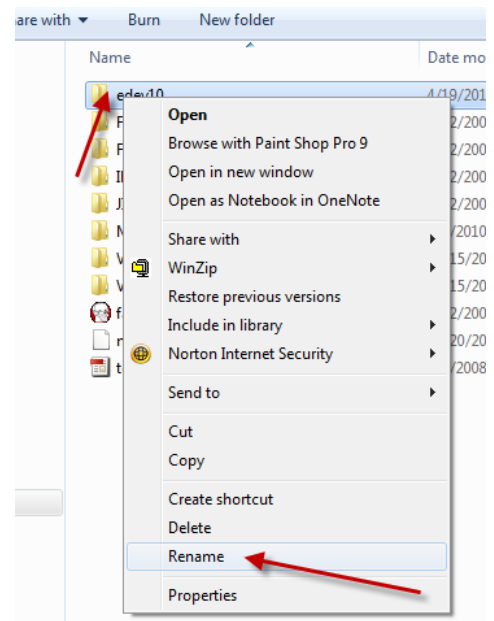
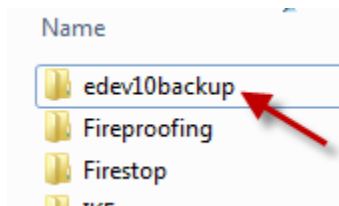
MIKE XV will display this error if one of its program files is damaged. This is usually caused by the computer crashing while MIKE XV is still running. It can also be caused by a Microsoft Update forcing your PC to reboot, while MIKE XV is open. In any case, the fix is simple.

### Step 1) Backup your program files.

On your C: drive, you will find the folder “C:\Comput-Ability\edev10”. This is the program folder that is damaged.



Right-Click Edev10, and select “Rename”. Then rename the folder “Edev10backup”.



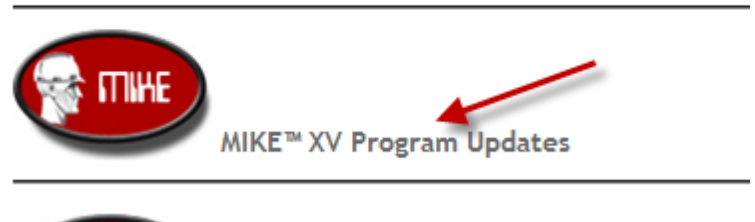
## Step 2) Reinstall MIKE XV

Now you'll need to reinstall MIKE XV. You could reinstall from your CD, or from our download site. I suggest you download it from our site. This will insure you're MIKE XV install is up to date. To do this, from our site <http://www.comput-ability.com>, select "Support" and "Downloads"



Support Software Hardware About Contact Us Related Links

Then "MIKE XV Program Update".



Then "MIKE XV Full Install". When prompted, select "Run". You may also need to confirm that you wish to allow this program to run. This depends on the version of Windows you're using.

Run the install, accepting all the default options.

**MIKE XV Program Updates**

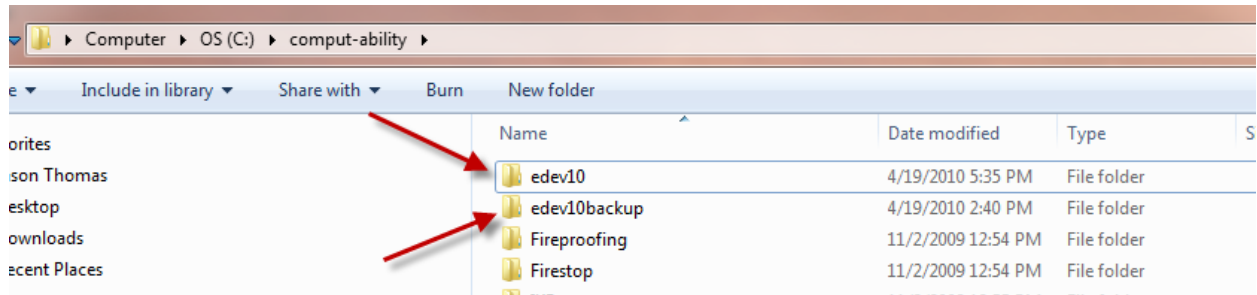
To download file (s) below, click on file (s) and save to your computer. Then run the ".exe" from your computer.

**[MIKE XV Full Install](#)**

Module	Version
Default Database	<u><a href="#">XV.1.4</a></u>
Estimating	<u><a href="#">XV.1.754</a></u>
Tables	<u><a href="#">XV.1.652</a></u>

### Step 3) Restoring your license File

Once you've completed the MIKE XV install, you'll need to restore the license file. To do this, copy "License", or "License.DAT" from the backup "Edev10back" folder to the new "edev10" folder that the install just created.



Open the folder "edev10backup", and locate the license file.

Right click the file, and select "Copy".

Then go back up to the "Comput-Ability" folder.

Right Click the new "Edev10" folder, and select "Paste". You will be asked if you would

like to overwrite the existing file, answer "Yes, Overwrite".

You will now be able to open MIKE XV with no errors, and have access to all your data.

